



FLOW ARRAY SENSING TOOL V2

MULTIPHASE FLOWS
DEVIATED AND HORIZONTAL WELLS
VERY LOW FLOWS
VERY LOW HOLDUPS
ULTRA COMPACT

FEATURES

TOOL

OD	1-11/16 in.
Length	42 in. (107 cm)
Max casing ID	7 in.
Number of arms	4
Fluid identification probes	8 (2 per arm)
Power supply	D-Battery 150 hours of continuous recording
Memory	384 MB
Electrical connexion	Kemlon monopin K25BMA 0.062"
Mechanical Connexion	Top: 15/16" PIN Bottom: 15/16" BOX / Optional: Go-head
Acquisition	Memory or real time through monocable
Interface	Plug & play USB to Computer

MEASUREMENTS

Gas Holdup	Optical Probe
Water Holdup	Electrical Probe Capacitance Probe
Flowrate	Magnetic Probe with mini-spinner Ultrasonic Doppler Array - 8 transducers
Pressure	MEMS Pressure Sensor Accuracy 1.5 Psi Resolution 0.015 Psi
Temperature	Platinum RTD probe Accuracy 0.15°C Resolution 0.015°C
Inclination	0-90° ± 1°
Relative bearing	0-360° ± 3°
CCL	Differential magnetometer
Natural radioactivity	Gamma Ray Detector (external module)

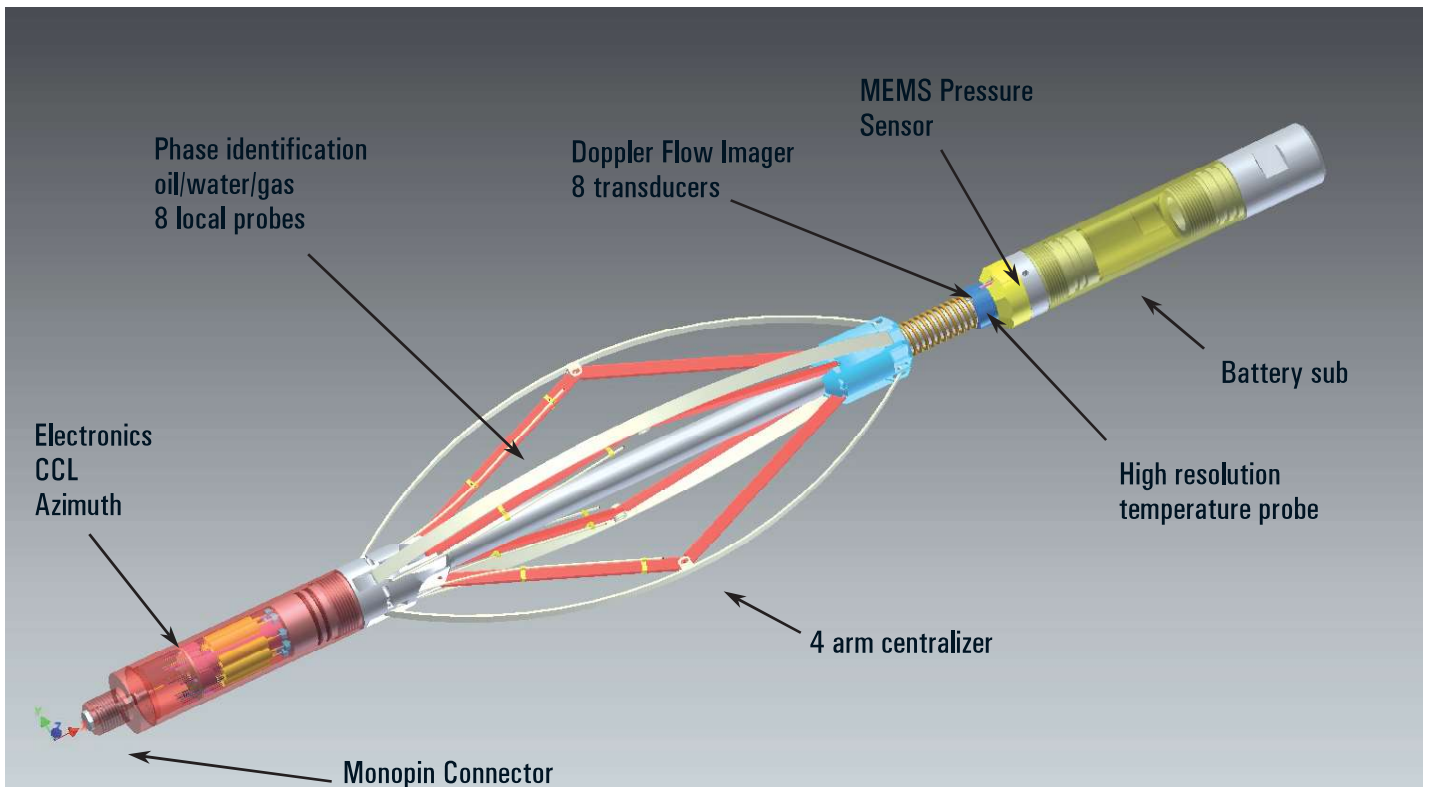


ENVIRONMENTAL

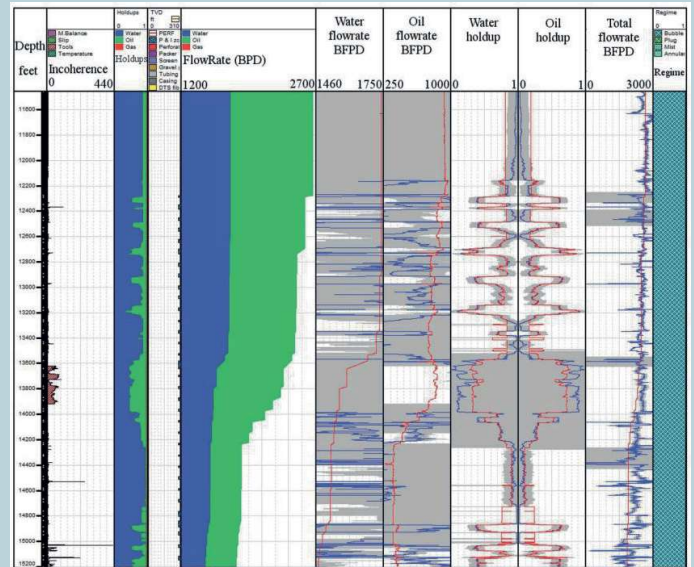
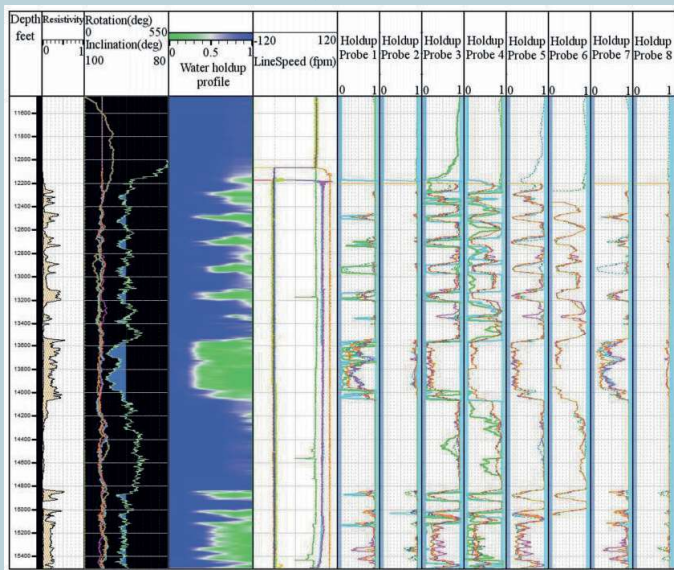
Pressure rating	15 kPsi (1000 bar)
Temperature rating	150°C (302°F)
Corrosion	NACE compliant materials: Stainless steel 316L, Inconel, Nickel, Sapphire
Shocks	250 G, 2 ms

MULTIPHASE PRODUCTION LOGGING TOOL

DEVIATED AND HORIZONTAL WELLS - VERY LOW FLOWS - VERY LOW HOLDUPS - ULTRA COMPACT

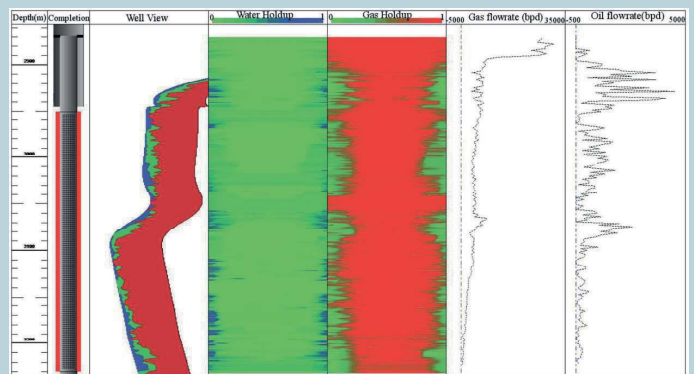


INTERPRETATION



FAST DATA COMPATIBLE WITH MAJOR INTERPRETATION SOFTWARE:

- KAPPA EMERAUDE
- ISP PLATO
- TECHLOG



Rev A: information furnished by OpenField is believed to be accurate and reliable. However, no responsibility is assumed by OpenField for its use, nor for any infringements of patents or other rights of third parties that may result from its use. Specifications subject to change without notice. No license is granted by implication or otherwise under any patent or patent rights of OpenField. Trademarks and registered trademarks are the property of their respective owners.



www.openfield-technology.com

13 rue de Limoges - 78000 Versailles - France
633 E. Fernhurst Dr. Ste. #105 - Katy TX 77450 - USA
©2011-2022 OpenField. All rights reserved.