

FEATURES

TOOL

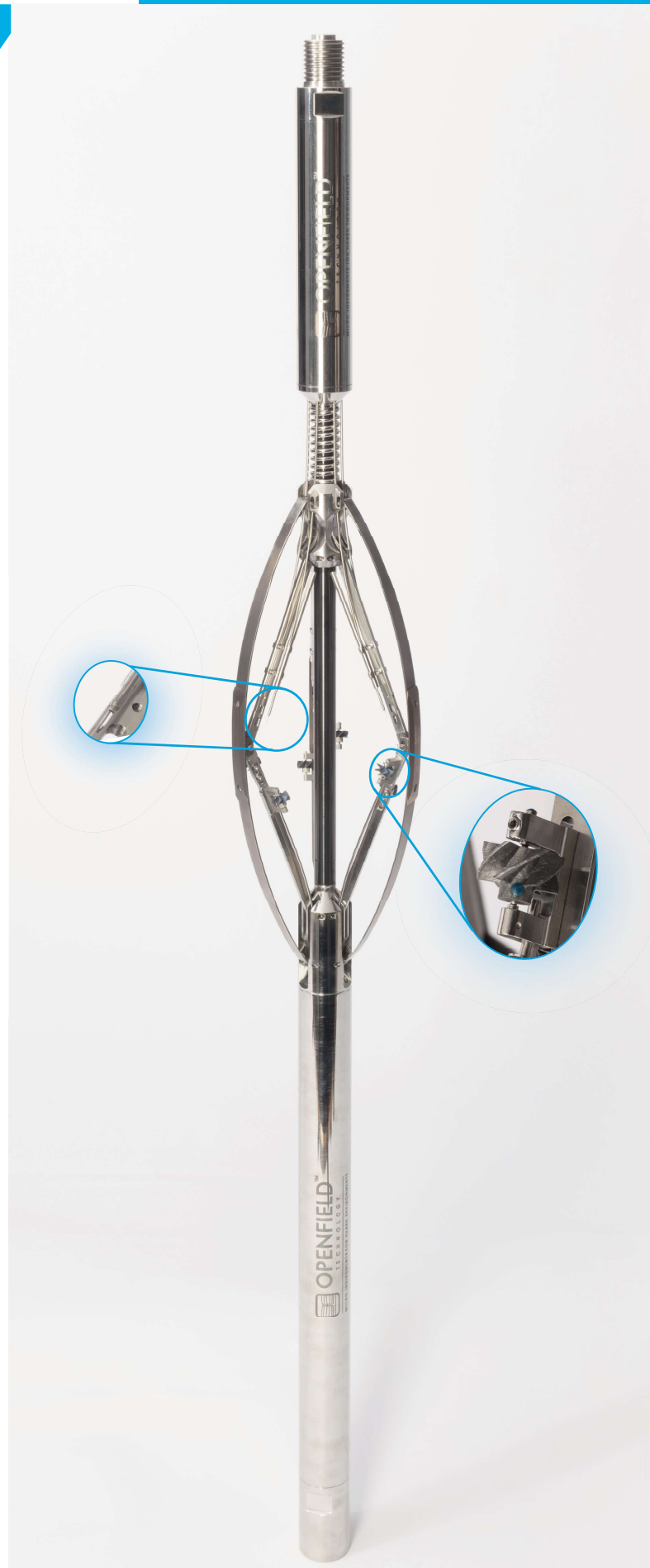
OD	1.25 in. (31.75 mm)
Length	35 in. (88 cm)
Max casing ID	4 in. (101.6 mm)
Number of arms	3
Modulable probes	12
Power supply	LRM21MM-Battery 150 hours of continuous recording
Memory	384 MB
Mechanical Connexion	Top: 15/16" Sucker Rod Top Bottom: 15/16" Sucker Rod Box
Acquisition	Memory or real time through monocable
Interface	Plug & play USB to Computer

MEASUREMENTS

Gas Holdup	Optical Probe
Water Holdup	Electrical Probe Capacitance Probe
Flowrate	Magnetic Probe with mini-spinner Ultrasonic Doppler Probe
Pressure	MEMS Pressure Sensor Probe Accuracy 1.5 Psi Resolution 0.015 Psi
Temperature	Platinum RTD Probe Accuracy 0.15°C Resolution 0.015°C
Inclination	0-90° ± 1°
Relative bearing	0-360° ± 3°
CCL	Differential magnetometer

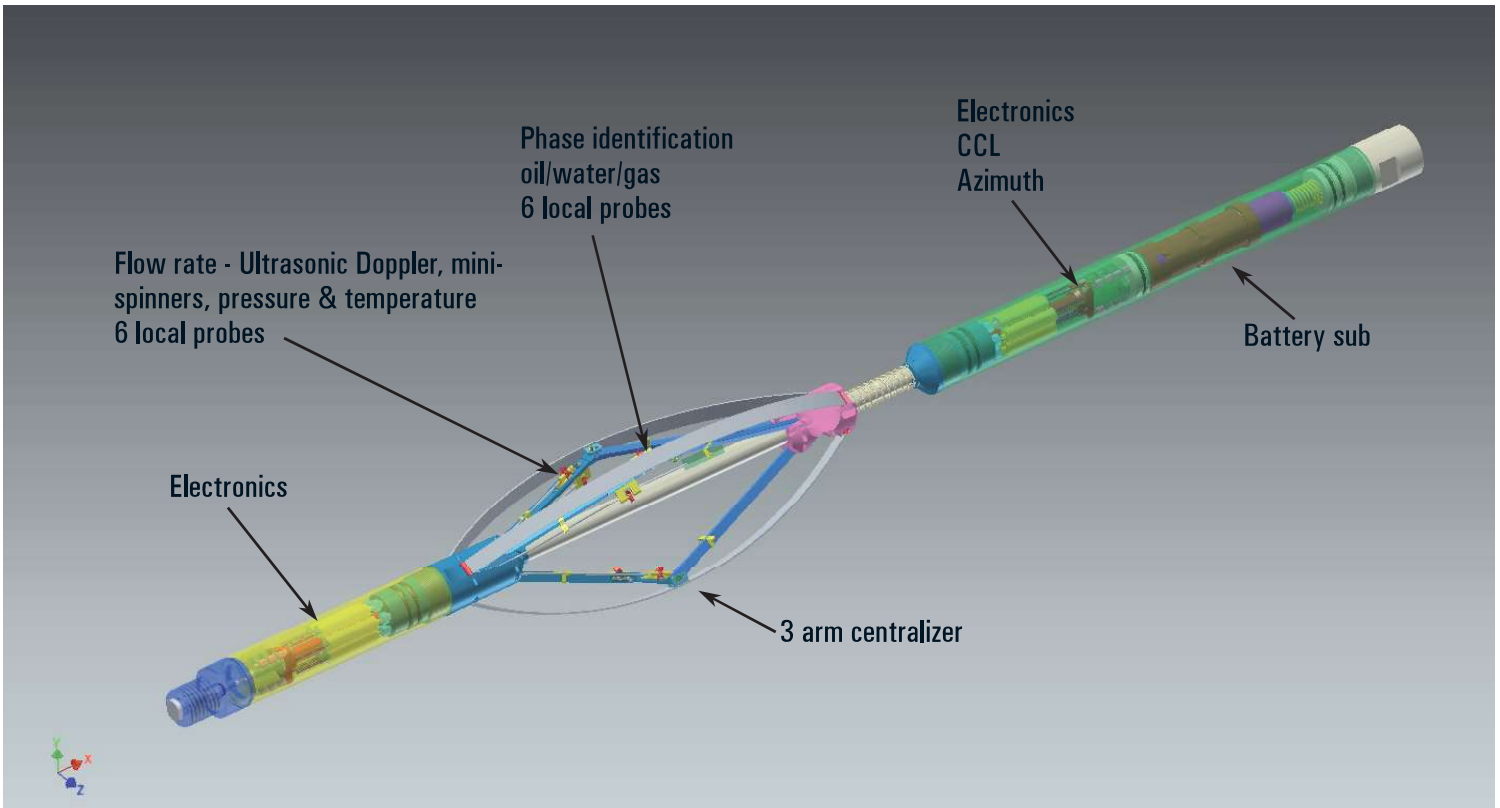
ENVIRONMENTAL

Pressure rating	15 kPsi (1000 bar)
Temperature rating	150°C (302°F)
Corrosion	NACE compliant materials: Stainless steel 316L, Inconel, Nickel, Sapphire
Shocks	250 G, 2 ms

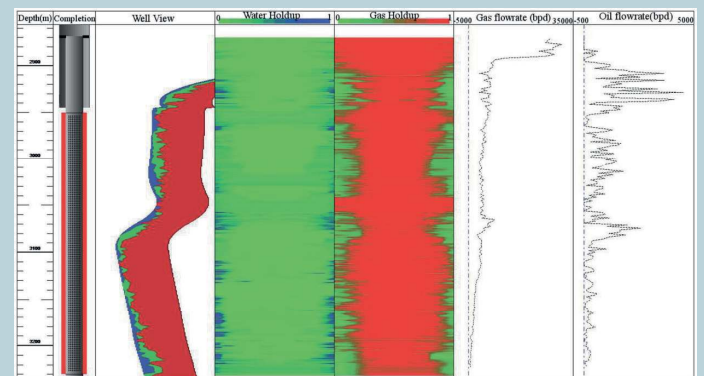
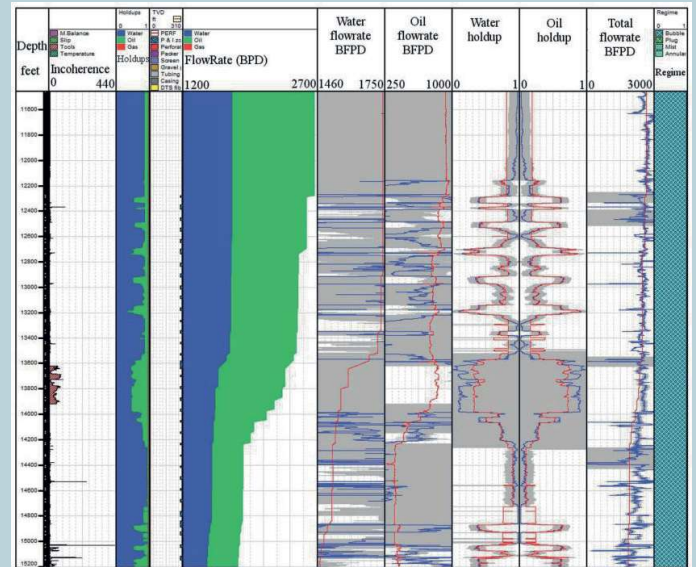
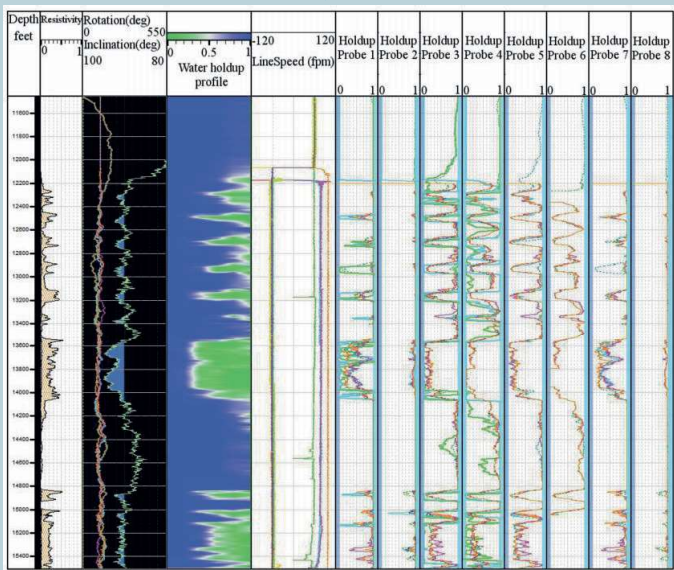


SLIM MULTIPHASE PRODUCTION LOGGING TOOL

DEVIATED AND HORIZONTAL WELLS - VERY LOW FLOWS - VERY LOW HOLDUPS - ULTRA COMPACT



INTERPRETATION



FAST DATA COMPATIBLE WITH MAJOR INTERPRETATION SOFTWARE:

- KAPPA EMERAUDE
- ISP PLATO
- TECHLOG

Rev A: information furnished by OpenField is believed to be accurate and reliable. However, no responsibility is assumed by OpenField for its use, nor for any infringements of patents or other rights of third parties that may result from its use. Specifications subject to change without notice. No license is granted by implication or otherwise under any patent or patent rights of OpenField. Trademarks and registered trademarks are the property of their respective owners.



www.openfield-technology.com

13 rue de Limoges - 78000 Versailles - France

633 E. Fernhurst Dr. Ste. #105 - Katy TX 77450 - USA

©2011-2022 OpenField. All rights reserved.