

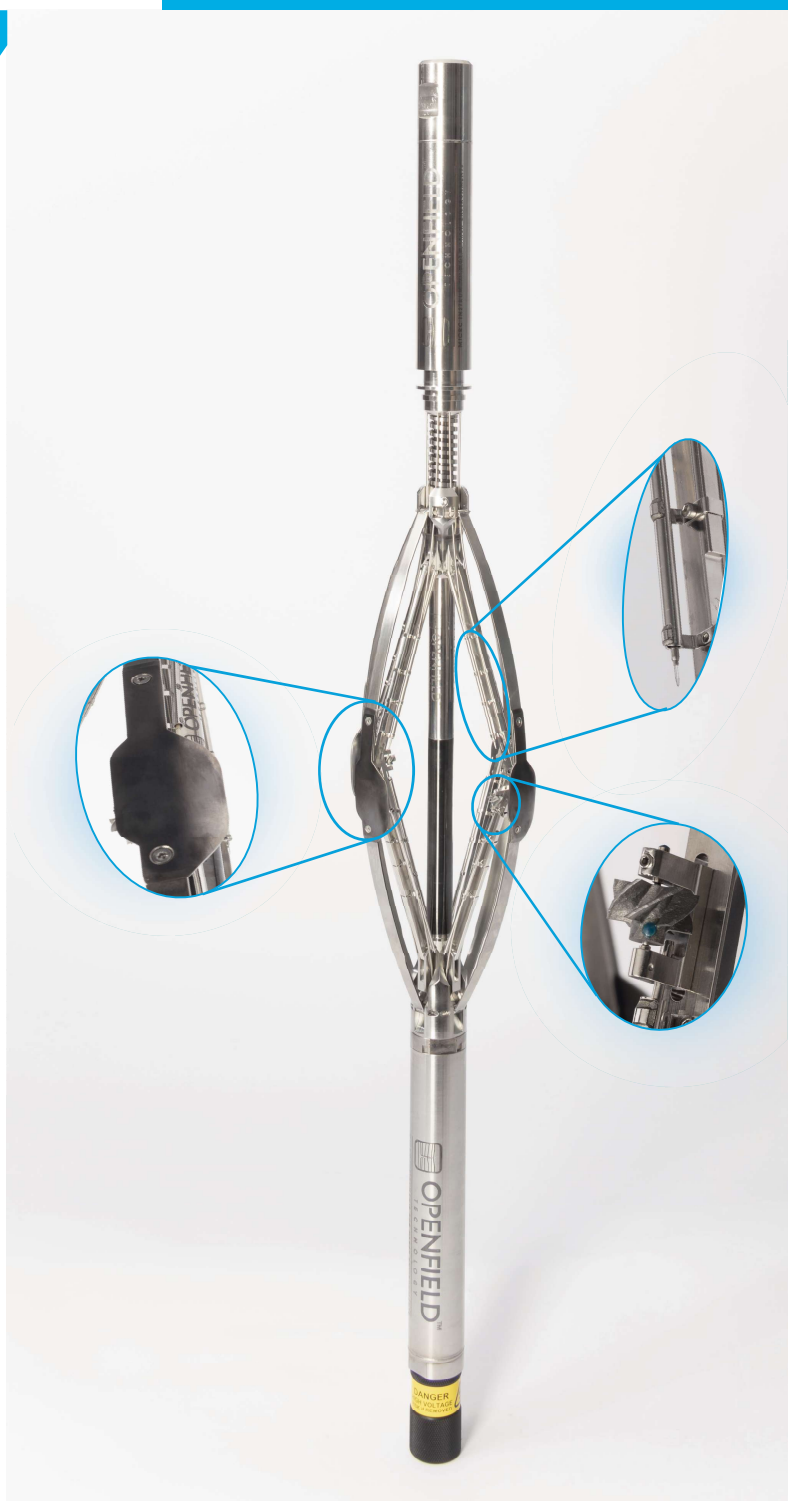
**FEATURES**

**TOOL**

<b>OD</b>	1-11/16 in.
<b>Length</b>	40.15 in. (102 cm)
<b>Max casing ID</b>	7 in.
<b>Number of arms</b>	4
<b>Modulable probes</b>	16
<b>Power supply</b>	D-Battery 150 hours of continuous recording
<b>Memory</b>	384 MB
<b>Mechanical Connexion</b>	Top: Inv. Go-head Box Bottom: Inv. Go-head Pin / Optional: 15/16" Sucker Rod
<b>Acquisition</b>	Memory or real time through monocable
<b>Interface</b>	Plug & play USB to Computer

**MEASUREMENTS**

<b>Gas Holdup</b>	Optical Probe
<b>Water Holdup</b>	Electrical Probe Capacitance Probe
<b>Flowrate</b>	Magnetic Probe with mini-spinner Ultrasonic Doppler Probe Continuous Spinner (external module)
<b>Pressure</b>	MEMS Pressure Sensor Probe Accuracy 1.5 Psi Resolution 0.015 Psi
<b>Temperature</b>	Platinum RTD Probe Accuracy 0.15°C Resolution 0.015°C
<b>Inclination</b>	0-90° ± 1°
<b>Relative bearing</b>	0-360° ± 3°
<b>CCL</b>	Differential magnetometer
<b>Natural radioactivity</b>	Gamma Ray Detector (external module)

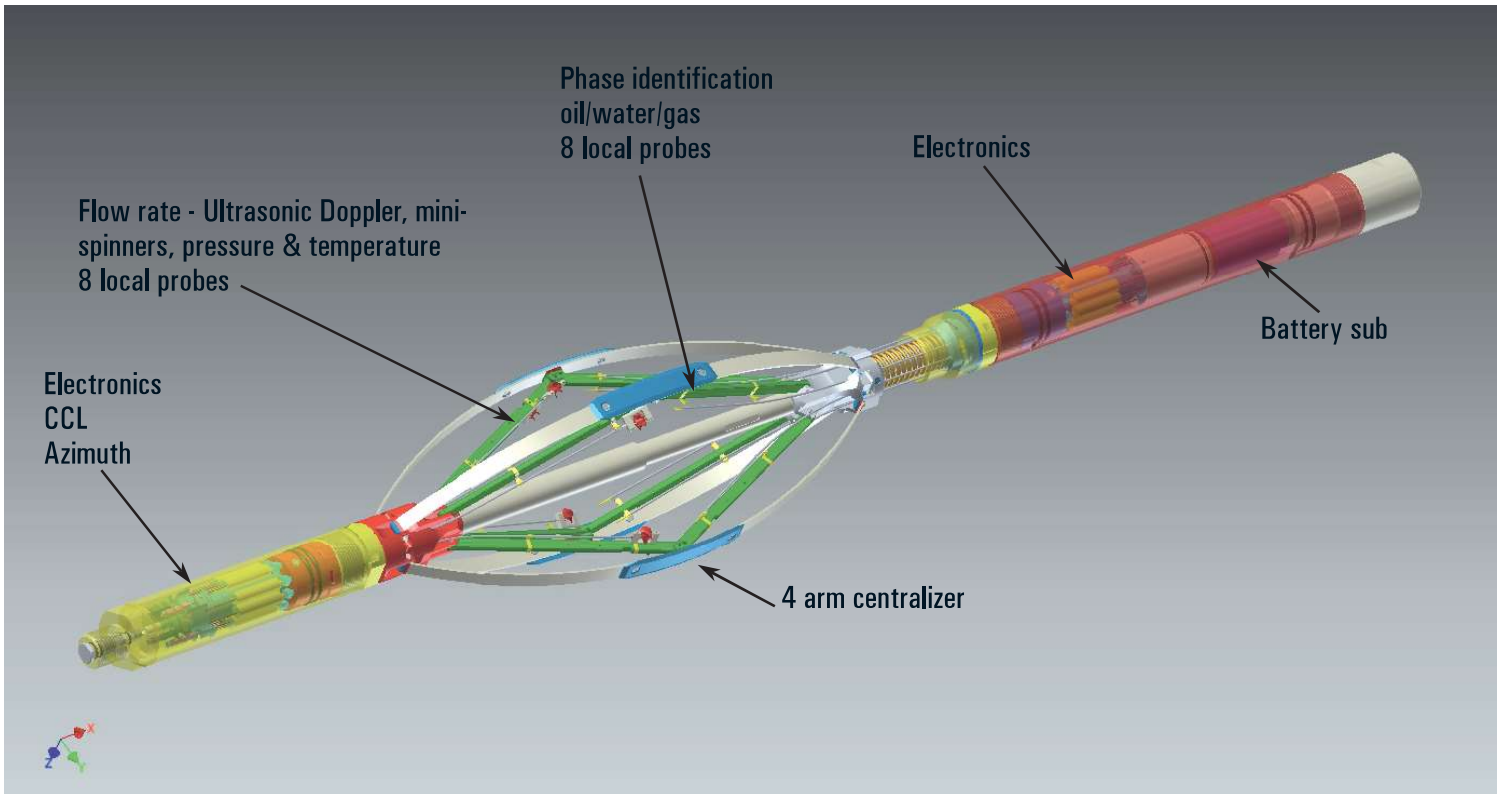


**ENVIRONMENTAL**

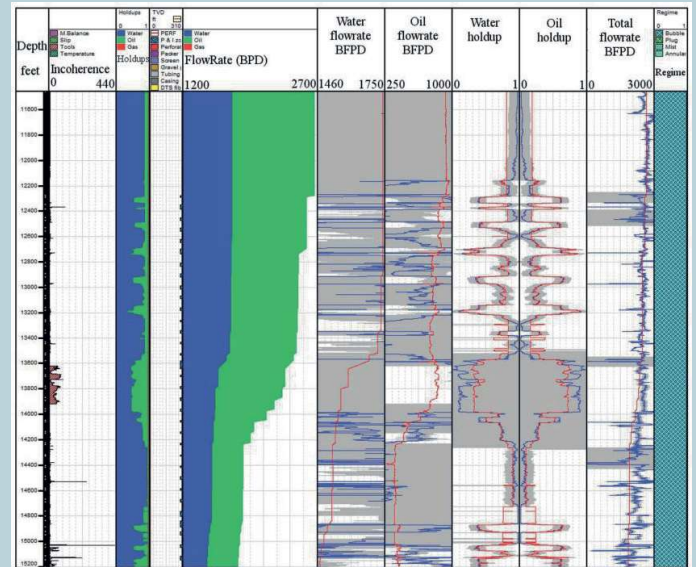
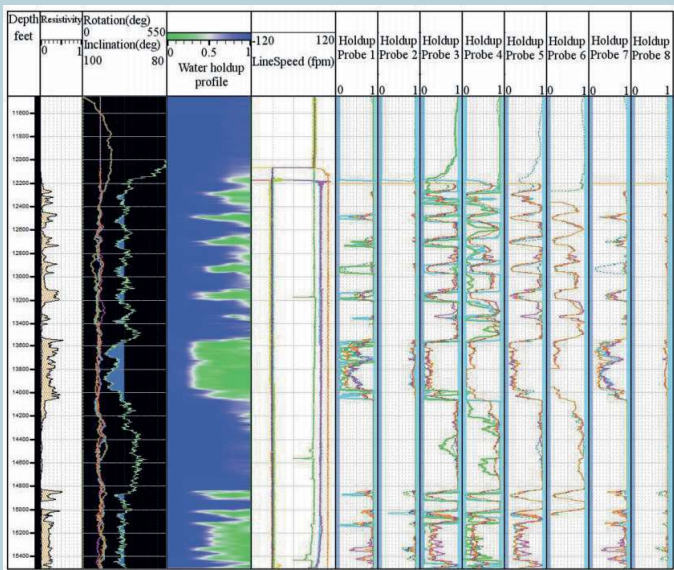
<b>Pressure rating</b>	15 kPsi (1000 bar)
<b>Temperature rating</b>	150°C (302°F)
<b>Corrosion</b>	NACE compliant materials: Stainless steel 316L, Inconel, Nickel, Sapphire
<b>Shocks</b>	250 G, 2 ms

# RUGGED MULTIPHASE PRODUCTION LOGGING TOOL

DEVIATED AND HORIZONTAL WELLS - VERY LOW FLOWS - VERY LOW HOLDUPS - ULTRA COMPACT - RUGGED MECHANICS

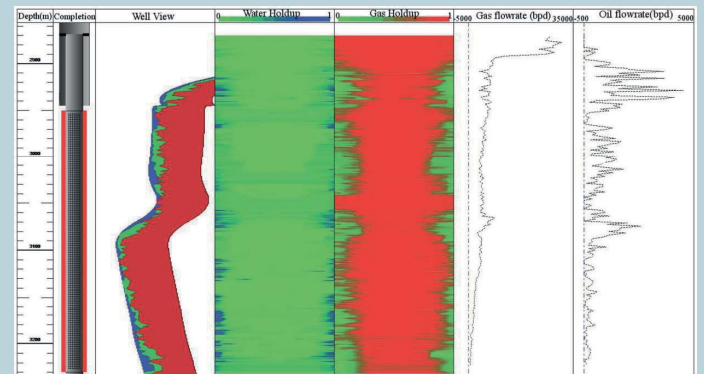


## INTERPRETATION



## FAST DATA COMPATIBLE WITH MAJOR INTERPRETATION SOFTWARE:

- KAPPA EMERAUDE
- ISP PLATO
- TECHLOG



Rev A: information furnished by OpenField is believed to be accurate and reliable. However, no responsibility is assumed by OpenField for its use, nor for any infringements of patents or other rights of third parties that may result from its use. Specifications subject to change without notice. No license is granted by implication or otherwise under any patent or patent rights of OpenField. Trademarks and registered trademarks are the property of their respective owners.



[www.openfield-technology.com](http://www.openfield-technology.com)

13 rue de Limoges - 78000 Versailles - France

633 E. Fernhurst Dr. Ste. #105 - Katy TX 77450 - USA

©2011-2022 OpenField. All rights reserved.